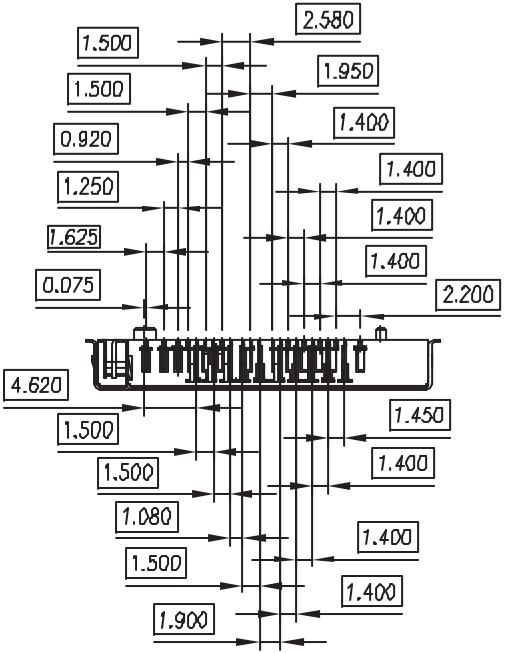


REV	MODIFICATION	DATE	DRAW

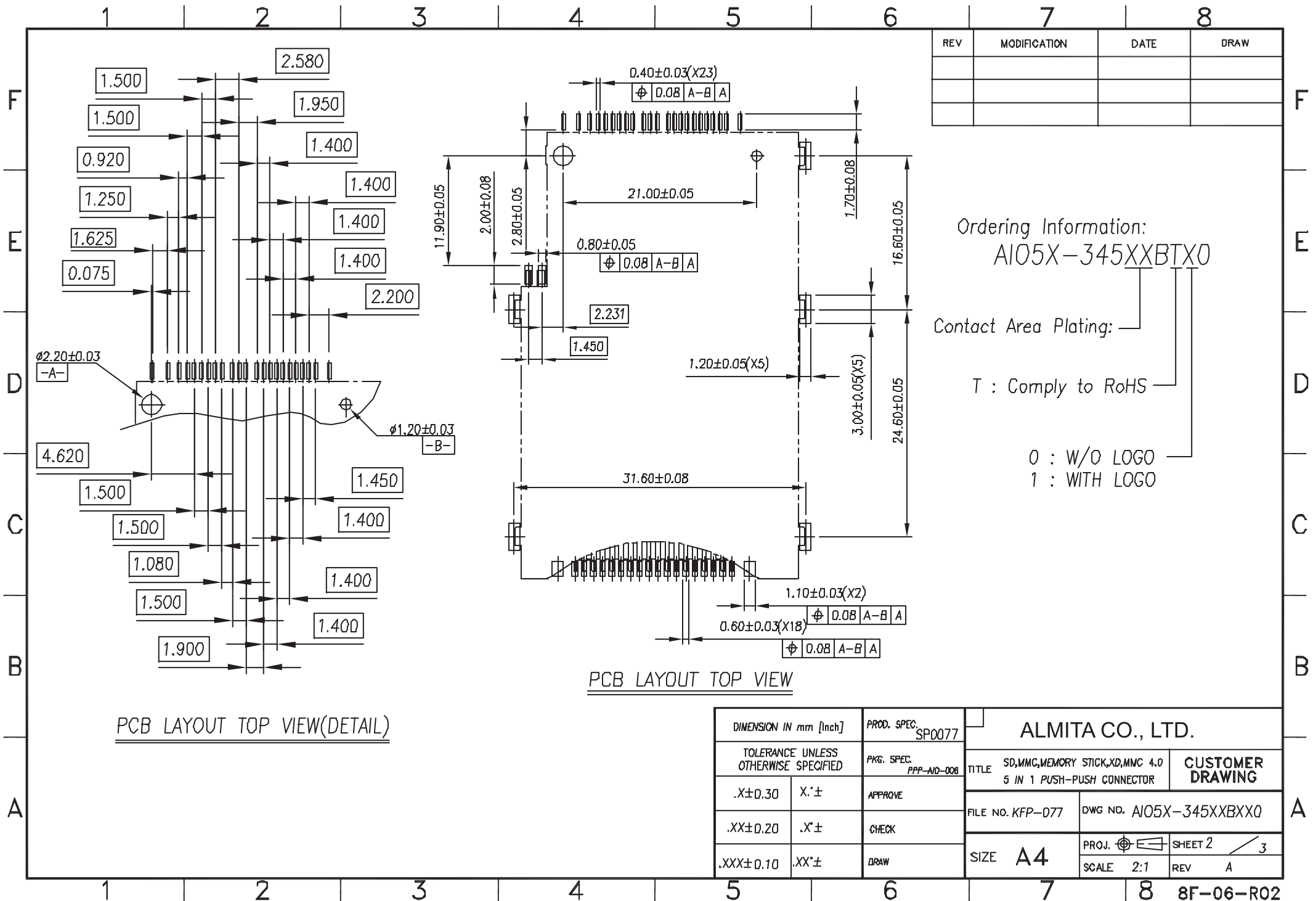
Ordering Information:
A105X-345XXBTX0

Contact Area Plating:

- 0 : W/O LOGO
- 1 : WITH LOGO
- T : Comply to RoHS



DIMENSION IN mm [Inch]		PROD. SPEC. SP0077	ALMITA CO., LTD.	
TOLERANCE UNLESS OTHERWISE SPECIFIED		PKG. SPEC. PPP-WD-008	TITLE 5D,MMC,MEMORY STICK,XD,MMC 4.0 5 IN 1 PUSH-PUSH CONNECTOR	CUSTOMER DRAWING
.X±0.30	X'±	APPROVE	FILE NO. KFP-077	DWG NO. A105X-345XXBXX0
.XX±0.20	.X'±	CHECK	SIZE A4	PROJ. SHEET 1 / 3
.XXX±0.10	.XX'±	DRAW	SCALE 3:2	REV A



REV	MODIFICATION	DATE	DRAW

Ordering Information:
A105X-345XXBTX0

Contact Area Plating:

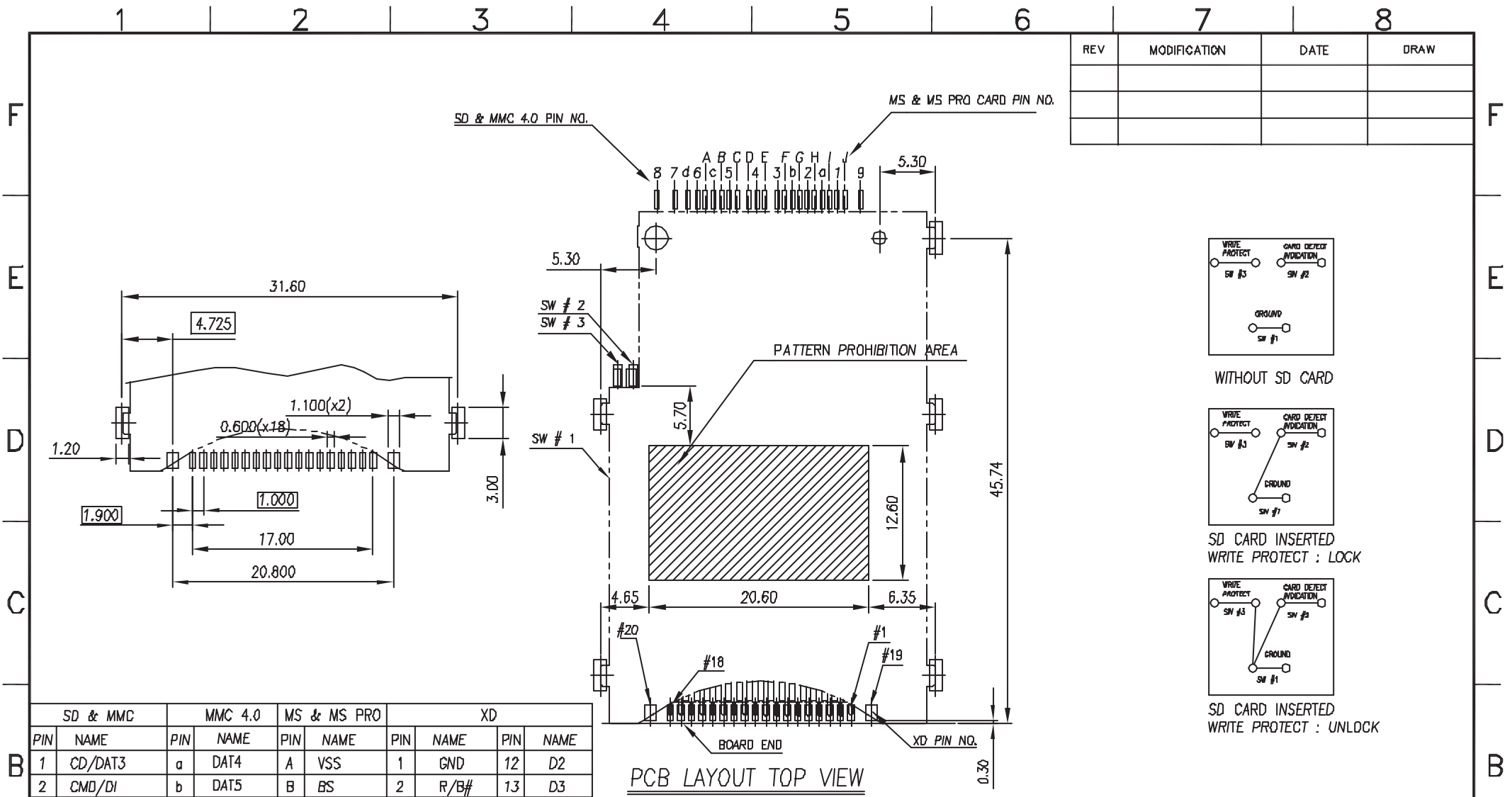
T : Comply to RoHS

0 : W/O LOGO
 1 : WITH LOGO

PCB LAYOUT TOP VIEW

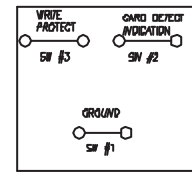
PCB LAYOUT TOP VIEW(DETAILED)

DIMENSION IN mm [Inch]		PROD. SPEC. SP0077	ALMITA CO., LTD.	
TOLERANCE UNLESS OTHERWISE SPECIFIED		PKG. SPEC. PPP-A10-008	TITLE SD,MMC,MEMORY STICK,X2,MMC 4.0 5 IN 1 PUSH-PUSH CONNECTOR	CUSTOMER DRAWING
.X±0.30	X'±	APPROVE	FILE NO. KFP-077	DWG NO. A105X-345XXBXX0
.XX±0.20	.X'±	CHECK	SIZE A4	PROJ. SHEET 2 / 3
.XXX±0.10	.XX'±	DRAW	SCALE 2:1	REV A

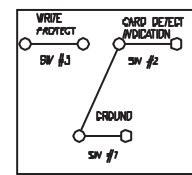


PCB LAYOUT TOP VIEW

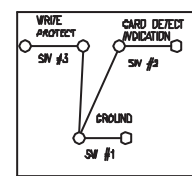
REV	MODIFICATION	DATE	DRAW



WITHOUT SD CARD



SD CARD INSERTED
WRITE PROTECT : LOCK



SD CARD INSERTED
WRITE PROTECT : UNLOCK

SD & MMC		MMC 4.0		MS & MS PRO		XD			
PIN	NAME	PIN	NAME	PIN	NAME	PIN	NAME	PIN	NAME
1	CD/DAT3	a	DAT4	A	VSS	1	GND	12	D2
2	CMD/DI	b	DAT5	B	BS	2	R/B#	13	D3
3	VSS1	c	DAT6	C	DATA1	3	RE#	14	D4
4	VDD	d	DAT7	D	SDIO/DATA0	4	CE#	15	D5
5	CLK/SCLK			E	DATA2	5	CLE	16	D6
6	VSS2			F	INS	6	ALE	17	D7
7	DAT0			G	DATA3	7	WE#	18	VCC
8	DAT1			H	SCLK	8	WP#	19	CD#
9	DAT2			I	VCC	9	GND	20	NC
				J	VSS	10	D0		
						11	D1		

DIMENSION IN mm [Inch]		PROD. SPEC.
TOLERANCE UNLESS OTHERWISE SPECIFIED		SP0077
.X±0.30	X'±	PKG. SPEC.
.XX±0.20	.X'±	PPP-AID-008
.XXX±0.10	.XX'±	APPROVE
		CHECK
		DRAW

ALMITA CO., LTD.			
TITLE		CUSTOMER DRAWING	
SD,MMC,MEMORY STICK,XD,MMC 4.0		5 IN 1 PUSH-PUSH CONNECTOR	
FILE NO. KFP-077	DWG NO. A105X-345XXBXX0		
SIZE	PROJ.	SHEET	
A4	SCALE 2:1	3 / 3	
	REV	A	