

4

3

2

1

PART NO. SEE TABLE

CUSTOMER DRAWING

REVISIONS			
LTR	DESCRIPTION	Drawing	DATE
A	ease for Manufacture Initial Rel	WITTY	03/09/07
B	ADD THE NEW PART NO.(15U")	WITTY	04/13/07
C	ADD THE NEW TYPE (PART NO.)	WITTY	04/21/07
D	更改主體的結構	WITTY	05/21/07
E	CHANGE MATERIAL;NEW TYPE:RED,BLACK	WITTY	09/17/07

TABLE

007-01-00491	15U"	PA46 BLACK
007-01-00490	G/F	
007-01-00485	15U"	PA46 RED
007-01-00484	G/F	
007-01-00412	15U"	PA46 BLUE
007-01-00411	G/F	
007-01-00410	15U"	PA46 GREEN
007-01-00409	G/F	
007-01-00377	30U"	LCP BLACK
007-01-00406	15U"	
007-01-00376	G/F	
PART NO	PLATING	MATERIAL&COLOR

NOTES:

1, MATERIAL:

HOUSING:HIGH TEMPERATURE THERMOPLASTIC,UL94 V-0,
COLOR:SEE TABLE

CONTACT:COPPER ALLOY T=0.30mm

LATCH:COPPER ALLOY T=0.30mm

2, PLATING:

LATCH:CU OVER 50u" MIN NICKEL

UNDERPLATE,SOLDERTAIL150u"MIN MISTY TIN OVER

50u" MIN NICKEL UNDERPLATE

CONTACT:100U"MIN TIN PLATING ON SOLDER TAILS 50U"MIN NICKET
UNDERPLATING OVER ALL GOLD SPECIFICATION:

a,G/F; b, 15u"; c, 30u";

3.ELECTRONICAL SPECIFICATION:

CURRENT RATING:1.5 AMPERE PER CONTACT

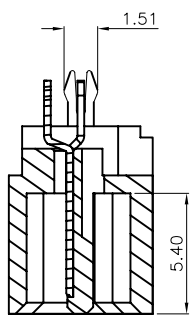
CONTACT RESISTANCE:30 MILLIOHMS MAX.

INSULATION RESISTANCE:1000 MEGOHMS MIN.

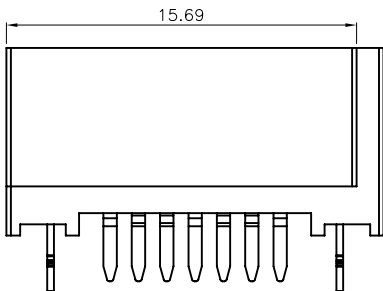
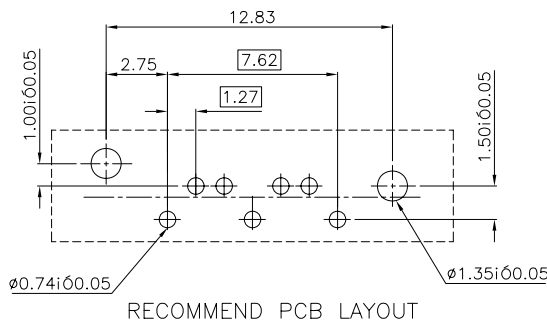
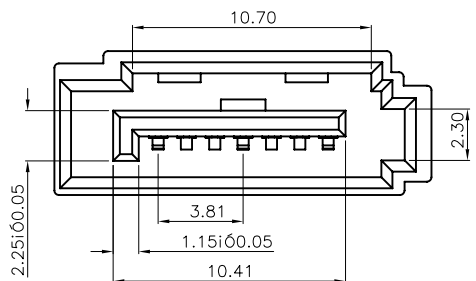
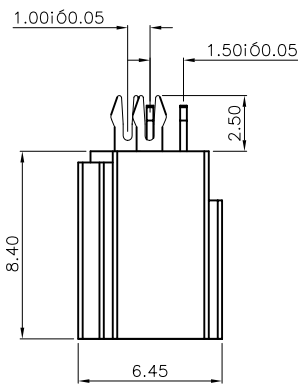
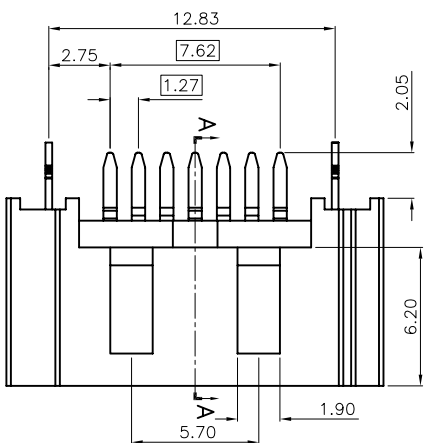
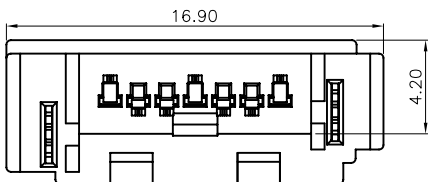
DIELECTRIC WITHSTANDING VOLTAGE:500 VAC.

OPERATING TEMPERATURE:-20°C~+85°C

4.MEETS THE REQUIREMENTS OF DIRECTIVE 2002/95/EC OF THE
EUROPEAN PARLIAMENT AND OF THE COUNCIL OF 27 JANUARY
2003 ON THE RESTRICTION OF THE USE OF CERTAIN HAZARDOUS
SUBSTANCES IN ELECTRICAL AND ELECTRONIC EQUIPMENT(ROHS)



SECTION A-A
SCALE 1:1



DIMENSION ARE
MILLIMETERS
TOLERANCES ARE :
DECIMALS
.X ± 0.30
.XX ± 0.25
ANGLE:
X ± 1°

APPROVALS		DATE
DRAWN	WITTY	09/17/07
CHECKED		
APPROVALS		

PART NO.		SEE TABLE	
TITLE: SATA 7P PLUG 180° A型 魚叉式全保有錯位(新端子)			
SIZE mm	SCALE : 1 : 1	DRAWING NO. 000462	REV. E
ID NO.	XXXXXXXXXX	SHEET 1 OF 1	

DESCRIPTION

Q'TY UNIT DO NOT SCALE DRAWING

4

3

2

1