

**RECOMMENDED PCB LAYOUT**

**MATERIAL**

INSULATOR: GLASS-REINFORCED THERMOPLASTIC (PBT),  
UL94V-0 RATED.

CONTACT: COPPER ALLOY.

PLATING: MATING AREA- SELECT GOLD OVER NICKEL.

SOLDER AREA- TIN/LEAD OVER NICKEL.

**ELECTRICAL**

DIELECTRIC WITHSTANDING VOLTAGE: 1,000 VAC RMS.

CURRENT RATING: 3 AMP.

INSULATION RESISTANCE: 5,000 MEG. OHMS MIN. AT 500 VDC.

CONTACT RESISTANCE: 20 MILLI OHMS MAX.

**MECHANICAL**

INSERTION FORCE: 340 GRAMS MAX PER CONTACT PAIR.

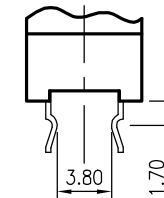
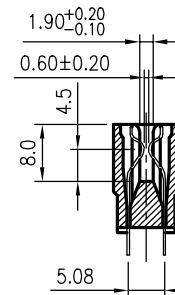
WITHDRAWAL FORCE: 28 GRAMS MIN PER CONTACT PAIR.

**ENVIRONMENTAL**

TEMPERATURE RANGE: -55° TO +85°.

**PART NO.**

Series No. SA 98 X L XX D Tail Type  
 SA: Slot 180° D: No Kink  
 No Of Pins 98 X L XX D  
 Contact B: Brass 02: 2 Pair Kinks  
 Plating L: Lead Free 04: 4 Pair Kinks  
 06: 6 Pair Kinks  
 08: 8 Pair Kinks  
 16: 16 Pair Kinks  
 Gold Plating  
 01: 1u" Gold  
 10: 10u" Gold



**DETAIL OF KINKED**

Pair Of Kinks	Kink Position
4 Pair Standard	A3,A26,A27,C16 & B3,B26,B27,D16
4 Pair Special	A4,A30,C2,C15 & B4,B30,D2,D15
6 Pair Standard	A3,A4,A28,A29,C15,C16 & B3,B4,B28,B29,D15,D16
* 8 Pair Standard	A2,A3,A24,A25,A28,A29,C16,C17 & B2,B3,B24,B25,B28,B29,D16,D17
8 Pair Special	A2,A3,A25,A26,A29,A30,C16,C17 & B2,B3,B25,B26,B29,B30,D16,D17
16 Pair Standard	A2,A3,A4,A14,A15,A16,A17,A28,A29,A30,A31,C1,C2,C3,C16,C17 & B2,B3,B4,B14,B15,B16,B17,B28,B29,B30,B31,D1,D2,D3,D16,D17

\* 配線標準

				TOLERANCE					TITLE: CARDEDGE SLOT 98 P, 2.54mm PITCH							
				LINEAR	ANGLES				PART NO. SA98XXXX							
C	New Release	Milji	Mar,08,2005	X.±0.40	X'±	APPD: Jason			MAT'L:							
B	920812	Schumi	Aug,29,2003	.X±0.30	.X'±	CHKD: Schumi			DWG NO. SA09807001							
A	920705	Schumi	Jun,26,2003	.XX±0.20	.XX'±	DRWN: Milji			FINISH:							
REV	ECN NO.	NAME	DATE	.XXX±0.10	.XXX'±	Q'TY:			UNITS SCALE SHEET REV							
									MM		1 : 1		1 OF 1		C	