

4

3

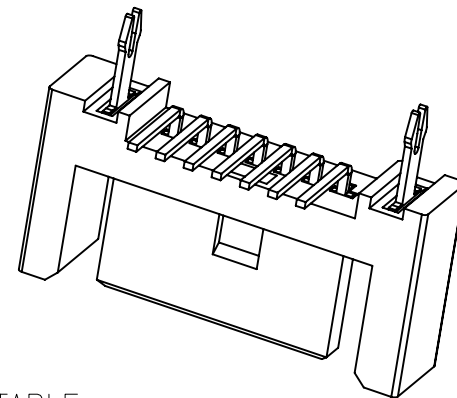
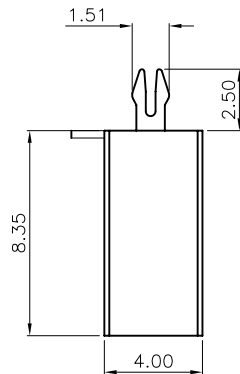
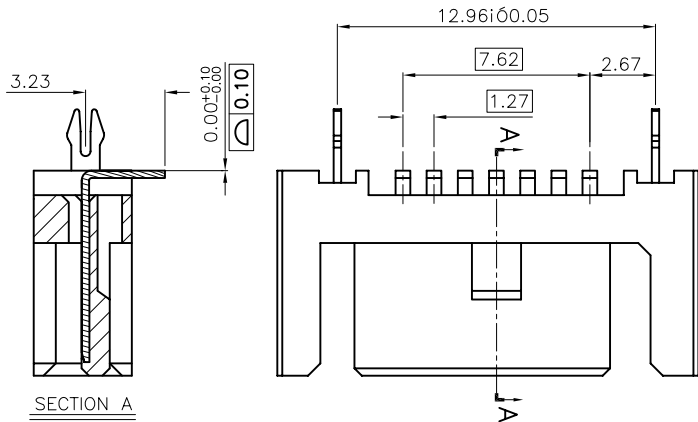
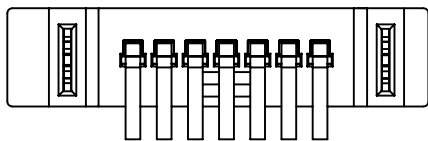
2

1

PART NO. SEE TABLE

CUSTOMER DRAWING

REVISIONS			
LTR	DESCRIPTION	Drawing	DATE
A	ease for Manufacture Initial Rel	WITTY	01/11/07
B	更改端子	WITTY	06/11/07

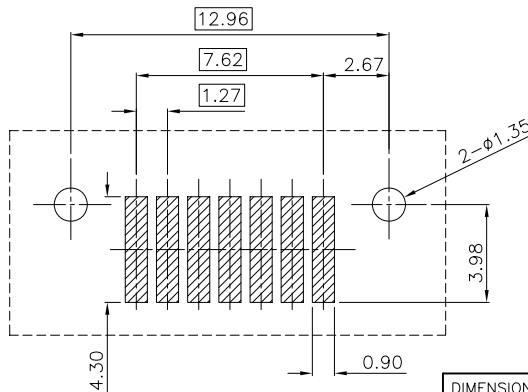
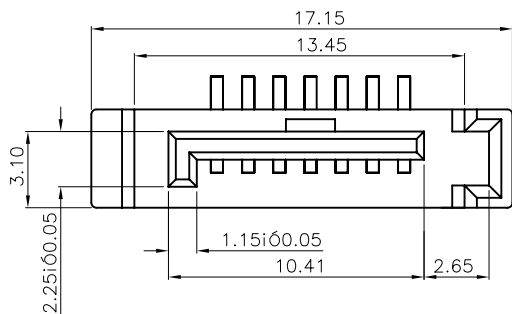


TABLE

007-01-00345	15U"	LCP BLACK
007-01-00344	G/F	LCP BLACK
PART NO	PLATING	MATERIAL

NOTES:

- MATERIAL:
HOUSING: HIGH TEMPERATURE THERMOPLASTIC, UL94 V-0,
CONTACT: COPPER ALLOY T=0.30mm
LATCH: COPPER ALLOY T=0.30mm
- PLATING:
LATCH: CU OVER 50u" MIN NICKEL
UNDERPLATE, SOLDER TAIL 150u" MIN MISTY TIN OVER
50u" MIN NICKEL UNDERPLATE
CONTACT: 100u" MIN MISTY TIN PLATING ON SOLDER TAILS
50u" MIN NICKEL UNDERPLATING OVER ALL GOLD SPECIFICATION:
a, G/F; b, 15u";
- ELECTRONICAL SPECIFICATION:
CURRENT RATING: 1.5 AMPERE PER CONTACT
CONTACT RESISTANCE: 30 MILLIOHMS MAX.
INSULATION RESISTANCE: 1000 MEGOHMS MIN.
DIELECTRIC WITHSTANDING VOLTAGE: 500 VAC.
OPERATING TEMPERATURE: -20°C ~ +85°C
- MEETS THE REQUIREMENTS OF DIRECTIVE 2002/95/EC OF THE EUROPEAN PARLIAMENT AND OF THE COUNCIL OF 27 JANUARY 2003 ON THE RESTRICTION OF THE USE OF CERTAIN HAZARDOUS SUBSTANCES IN ELECTRICAL AND ELECTRONIC EQUIPMENT (ROHS)



RECOMMEND PCB LAYOUT
PCB TOLERANCE: ±0.05

DIMENSION ARE
MILLIMETERS
TOLERANCES ARE:
DECIMALS
.X ± 0.20
.XX ± 0.15
ANGLE:
X ± 1°

APPROVALS		DATE
DRAWN	WITTY	06/11/07
CHECKED		
APPROVALS		

PART NO.		007-01-00344/00345	
TITLE:			
SATA 7P PLUG 雙導槽 SMT BEND			
SIZE	SCALE :	DRAWING NO.	REV.
mm	1: 1	000438	B
ID NO.	XXXXXXXXXX	SHEET 1 OF 1	

DESCRIPTION

Q'TY UNIT

DO NOT SCALE DRAWING

4

3

2

1

D

C

B

A

D

C

B

A