

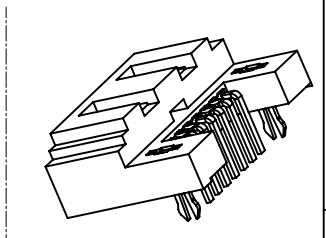
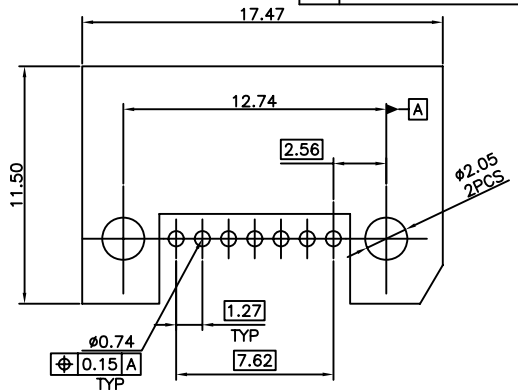
PART NO. SEE TABLE

REVISIONS			
LTR	DESCRIPTION	Drawing	DATE
A	ease for ManufactureInitial Rel	BILL	01/25/07
B	ADDITION THE PA46 PART NO.	BILL	03/30/07

CUSTOMER DRAWING

TABLE

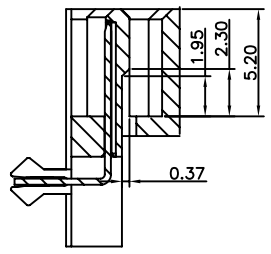
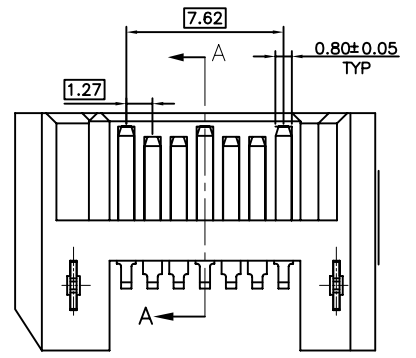
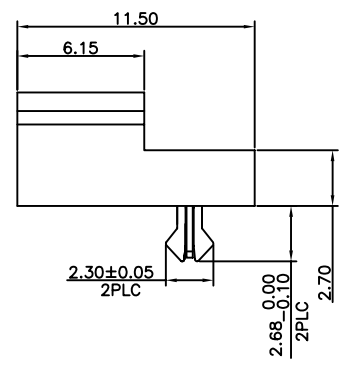
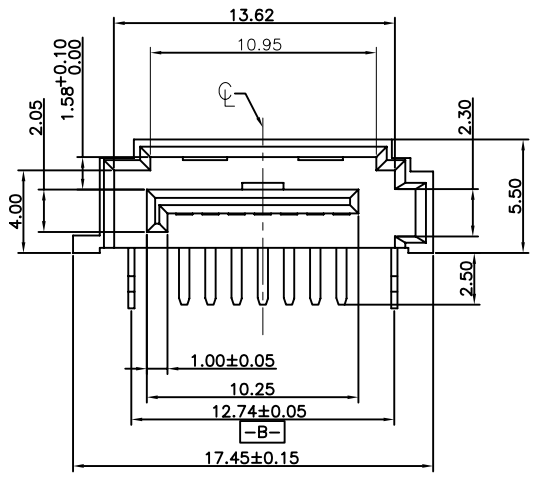
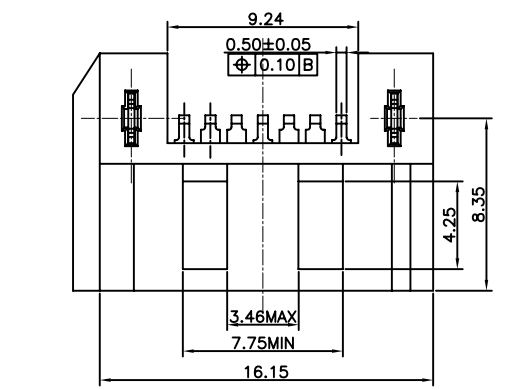
PART NO	PLATING	MATERIAL&COLOR
007-01-00360	15U*	LCP BLACK
007-01-00359	G/F	LCP BLACK
007-01-00396	15U*	PA46 BLACK
007-01-00395	G/F	PA46 BLACK



RECOMMEND PCB LAYOUT
PCB TOLERANCE:±0.05

NOTES:

- MATERIAL:
HOUSING: HIGH TEMPERATURE THERMOPLASTIC UL94V-0 COLOR:BLACK.
CONTACT: COPPER ALLOY.
BOARD LOCK: COPPER ALLOY.
- FINISH:
CONTACT: GOLD PLATING ON CONTACT AREAS;
TIN PLATED ON SOLDER TAILS;
NICKEL UNDERPLATE OVER ALL.
BOARD LOCK: TIN PLATED ON SOLDER TAILS;
NICKEL UNDERPLATE OVER ALL.
- PRODUCT SPECIFICATION REFERENCE TO *****.
- PACKAGING SPECIFICATION REFERENCE TO *****.



SECTION A-A

DIMENSION ARE MILLIMETERS TOLERANCES ARE : DECIMALS .X ± 0.30 .XX ± 0.25 ANGLE: X ± 1°	APPROVALS		DATE	PART NO. 007-01-00395/00396 007-01-00359/00360
	DRAWN	BILL	03/30/07	
	CHECKED			
	APPROVALS			
	SIZE	SCALE :	DRAWING NO.	REV.
	mm	1 : 1	000454	B
	ID NO.	XXXXXXXXXX	SHEET 1 OF 1	

NO	DESCRIPTION	QTY	UNIT	DO NOT SCALE DRAWING
4				
3				
2				
1				