

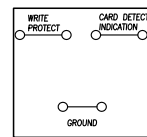
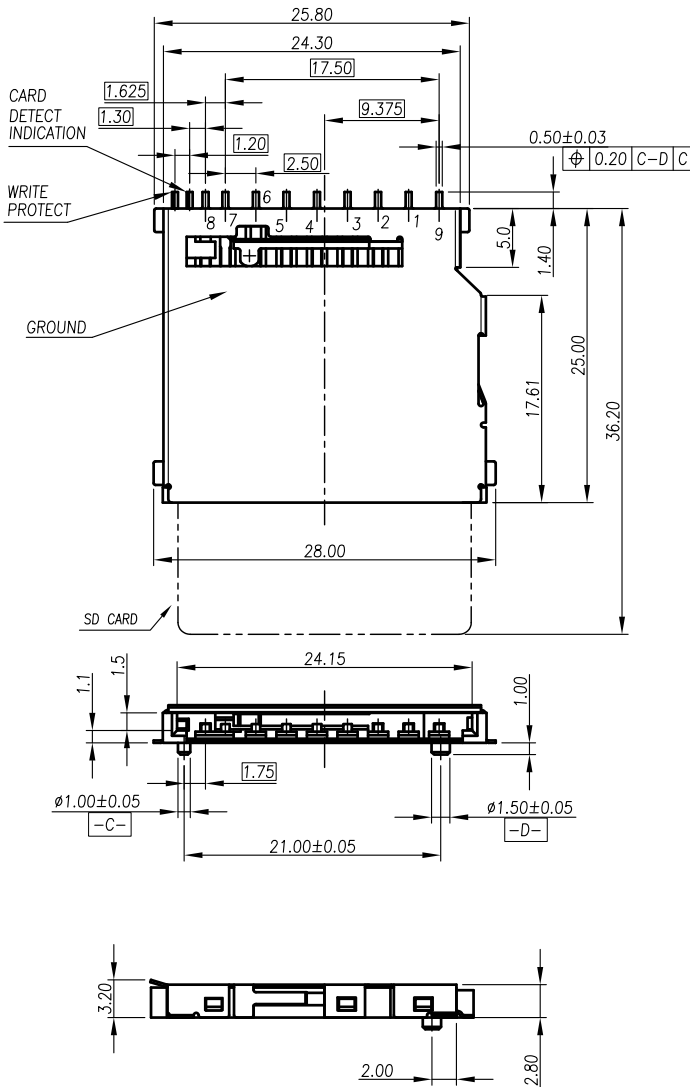
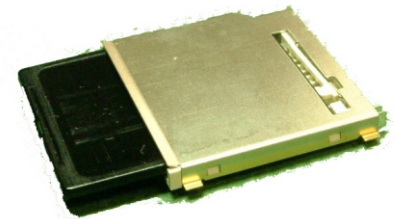
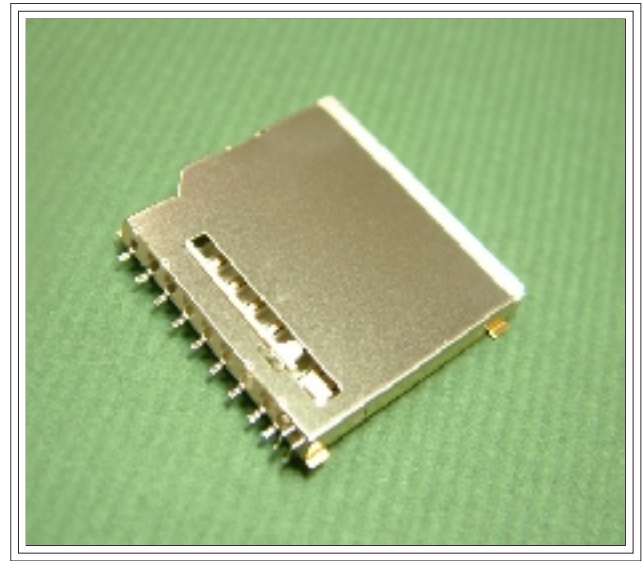
# Secure Digital Card Connector

## Metal Cover Type

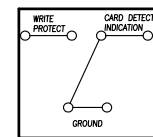
TL9000 IECQ TL9000 IECQ TL9000 IECQ TL9000 IECQ TL9000 IECQ TL9000 IECQ TL9000 IECQ TL9000 IECQ TL9000

Part No:

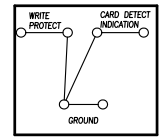
# SDCMF-10915W010



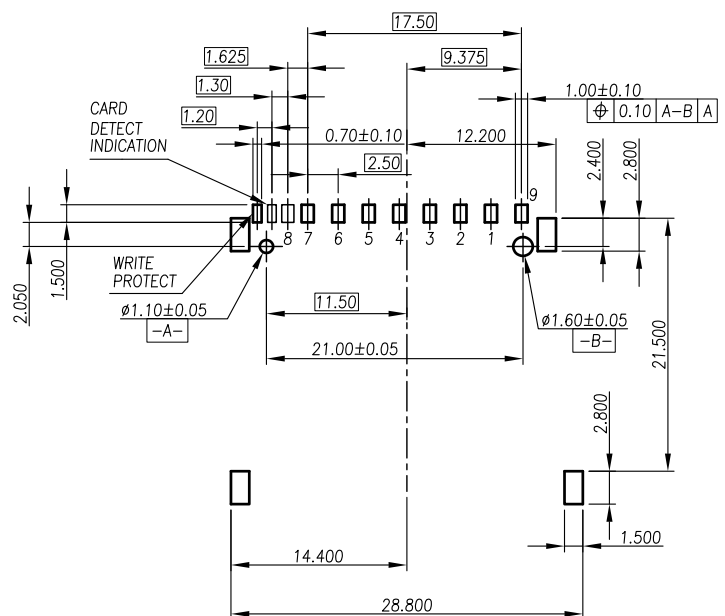
WITHOUT CARD



CARD INSERTED  
WRITE PROTECT : LOCK



CARD INSERTED  
WRITE PROTECT : UNLOCK



P.C.B Layout

### Specification:

Withstanding Voltage: 500V AC Max for 1 Minute  
 Insulation Resistance: 1,000 M Ohms  
 Voltage Rating: 250VAC  
 Current Rating: 0.5A AC/DC Max  
 Contact Resistance: 40M Ohms Max  
 Operating Temperature: -25 C ~ +85 C  
 Insertion Cycles: 10,000 Times

### Application:

For Secure Digital And Multi Media Card Use

### Material And Finish:

Contact: Phosphor Bronze  
 Tin/Lead 100 at Solder Tail  
 Contact Area Gold Plating 15  
 Cover: Brass, Nickel Plating For All  
 Housing: LCP, Glass Fiber