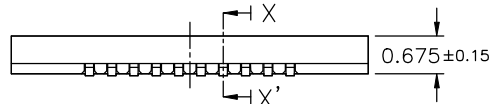
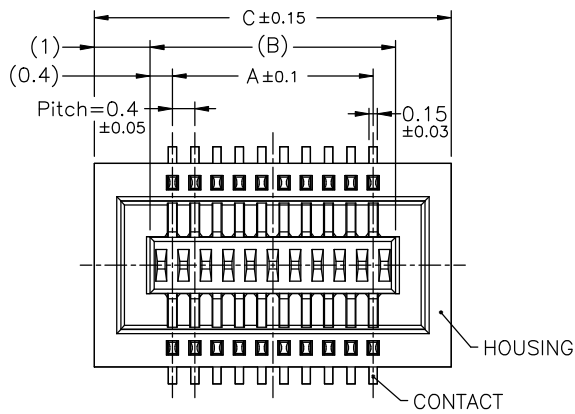


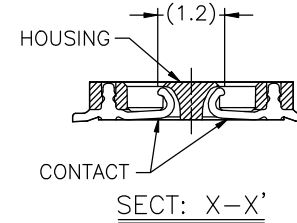
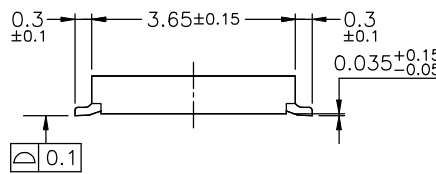
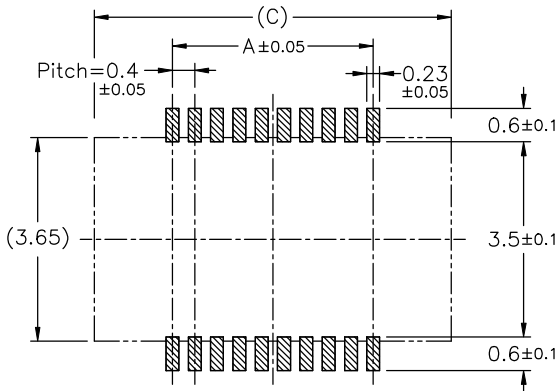
REV.	ECN NO.	DATE
A	RELEASED	2004.12.10

NOTE:

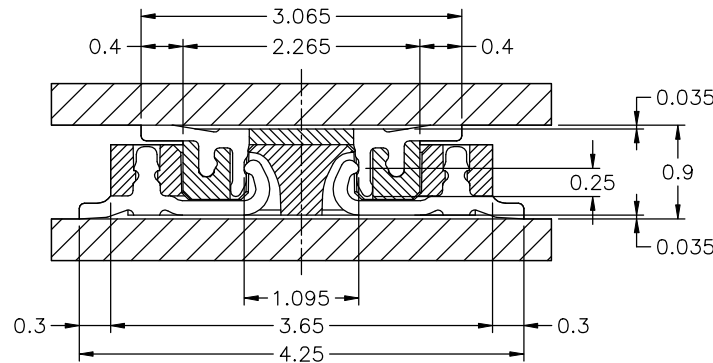
- MATERIAL:  
HOUSING:THERMOPLASTIC  
CONTACTS:COPPER ALLOY
- PLATING:SEE ORDERING INFORMATION
- PART NO. :  
BB409- xxx F - xx xxx  
  - 05G-5U" GOLD OVER NICKEL
  - 10G-10U" GOLD OVER NICKEL
  - PACKAGE  
TA-EMBOSSED TAPE  
TU-TUBE
  - FEMALE
  - NO. OF CONTACTS
- RATING:  
OPERATING VOLTAGE:50V  
CURRENT RATING:0.3A  
OPERATING TEMPERATURE:-25°C ~ +85°C



PCB Layout



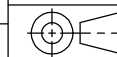
MATED DRAWING(REF.)



SCALE: 15/1

No. of Contacts	Catalog No.	DIM. A	DIM. B	DIM. C
10	BB409-010F	1.6	2.4	4.4
12	BB409-012F	2.0	2.8	4.8
14	BB409-014F	2.4	3.2	5.2
16	BB409-016F	2.8	3.6	5.6
18	BB409-018F	3.2	4.0	6.0
20	BB409-020F	3.6	4.4	6.4
22	BB409-022F	4.0	4.8	6.8
24	BB409-024F	4.4	5.2	7.2
26	BB409-026F	4.8	5.6	7.6
28	BB409-028F	5.2	6.0	8.0
30	BB409-030F	5.6	6.4	8.4
32	BB409-032F	6.0	6.8	8.8
34	BB409-034F	6.4	7.2	9.2
36	BB409-036F	6.8	7.6	9.6
38	BB409-038F	7.2	8.0	10.0
40	BB409-040F	7.6	8.4	10.4
42	BB409-042F	8.0	8.8	10.8
44	BB409-044F	8.4	9.2	11.2
46	BB409-046F	8.8	9.6	11.6
48	BB409-048F	9.2	10.0	12.0
50	BB409-050F	9.6	10.4	12.4
52	BB409-052F	10.0	10.8	12.8
54	BB409-054F	10.4	11.2	13.2
56	BB409-056F	10.8	11.6	13.6
58	BB409-058F	11.2	12.0	14.0
60	BB409-060F	11.6	12.4	14.4
62	BB409-062F	12.0	12.8	14.8
64	BB409-064F	12.4	13.2	15.2
66	BB409-066F	12.8	13.6	15.6
68	BB409-068F	13.2	14.0	16.0
70	BB409-070F	13.6	14.4	16.4
72	BB409-072F	14.0	14.8	16.8
74	BB409-074F	14.4	15.2	17.2
76	BB409-076F	14.8	15.6	17.6
78	BB409-078F	15.2	16.0	18.0
80	BB409-080F	15.6	16.4	18.4

TOLERANCE UNLESS SPECIFIED		SHEET 1/4	DR. BY Bonnie LI	MATERIAL SEE NOTE 1
LINEAR	ANGLE	SCALE 8/1	CHK. BY S.T.LIN	FINISH SEE NOTE 2
.X	.X'	UNIT mm	APP. BY S.T.LIN	PART NO. SEE NOTE 3
.XX	.XX'			
.XXX	.XXX'			



TITLE 0.4mm Pitch B-T0-B Connector  
DWG NO. BB409