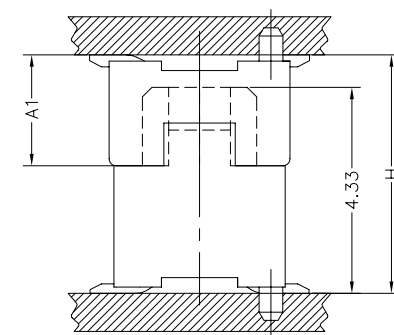
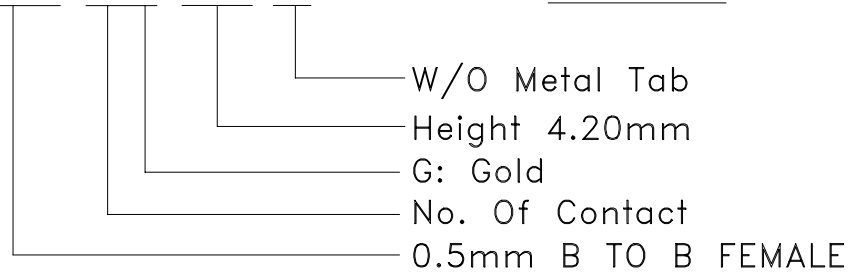


PCB LAYOUT



Mating Draw (Ref)

How To Order
BF05-XXG-420-01



**Mating Dimension

P/N(Male)	P/N(Female)	Male Height Dim A1	Mating Height Dim H
BM05-XXG-220-01	BF05-XXG-420-01	2.33	5.00
BM05-XXG-270-01	BF05-XXG-420-01	2.83	5.50

**Contact Dimension

Contact	DIM. A	DIM. B	DIM. C	DIM. D
14	5.60	3.00	5.10	4.10
20	7.10	4.50	6.60	5.60
30	9.60	7.00	9.10	8.10
32	10.10	7.50	9.60	8.60
36	11.10	8.50	10.60	9.60
40	12.10	9.50	11.60	10.60
50	14.60	12.00	14.10	13.10
60	17.10	14.50	16.60	15.60

Specifications

- Current Rating : 0.5A AC/DC
- Voltage Rating : 50V AC/DC
- Contact Resistance : 30m ohm. max.
- Insulation Resistance : 100M ohm. min.at 100V DC
- Withstanding Voltage : 100V AC for one minute
- Operating Temperature Range : -20°C to +105°C

Material and Plating

- Housing : LCP (Natural Color)UL94V-0
 - Contact : Phosphor Bronze
 - Plating : 3u" Gold Flash
- Number Of Connectors:800pcs/Reel

DRAWN: JACK	GENERAL TOLERANCE:	B	05-Aug-2003	BF05-XXG-420-01	Jeremy Liu
	.X = ±0.2 .XX = ±0.15	A	09-28-2002		JACK
CHECKED: JEREMY LIU	UNIT: MM	REV	DATE	FILE	BY
	SCALE:15:1	DESCRIPTION: 0.5mm B TO B FEMALE 母座 4.20mm High Without Metal Tab			
APPROVAL: MIKE WU	SHEET: 1 / 1	PART NO:			SIZE A4
	PROJECTION:	BF05-XXG-420-01 FEMALE 母座			